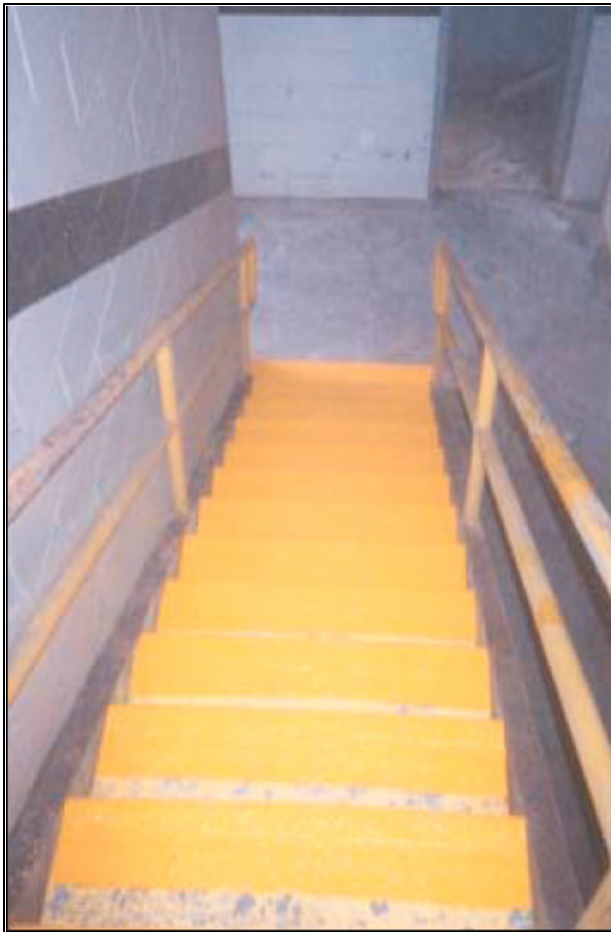
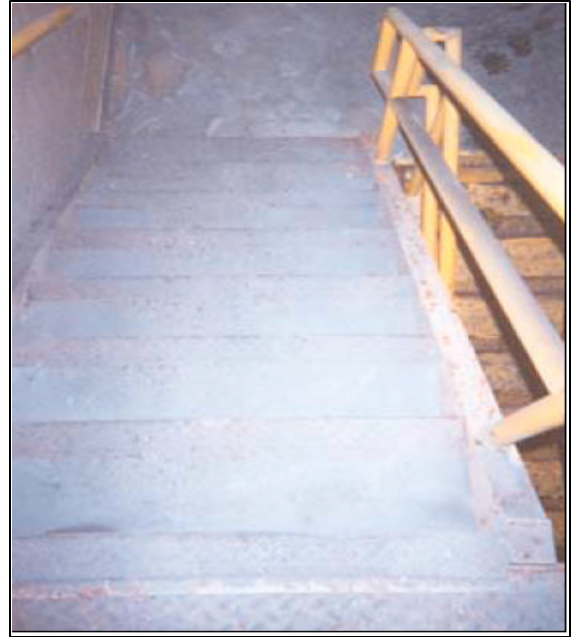




Project: Hydro-electric Plant Stairs

The Problem

This hydroelectric plant had severe problems with moisture accumulations on their steps at level -36.



The Solution

RPT pressure washed and hand tooled the concrete and steel treads. **Thortex Corro-Tech GP** was applied to the steel nosing followed by a 40-mil coat of **Thortex Grip-Tech** with aluminum oxide as the aggregate.

Thortex Corro-Tech GP is a high-performance, anti-corrosive coating for use on new and existing steel structures for long-term protection where surface preparation is restricted.

Thortex Grip-Tech is a high-performance, solvent-free, epoxy coating used (with the addition of an aggregate) as a universal slip deterrent for mineral and metallic surfaces.

Thortex America, Inc.

12 Iron Bridge Drive • Collegeville, PA 19426
800.578.2772 • www.thortex.com