

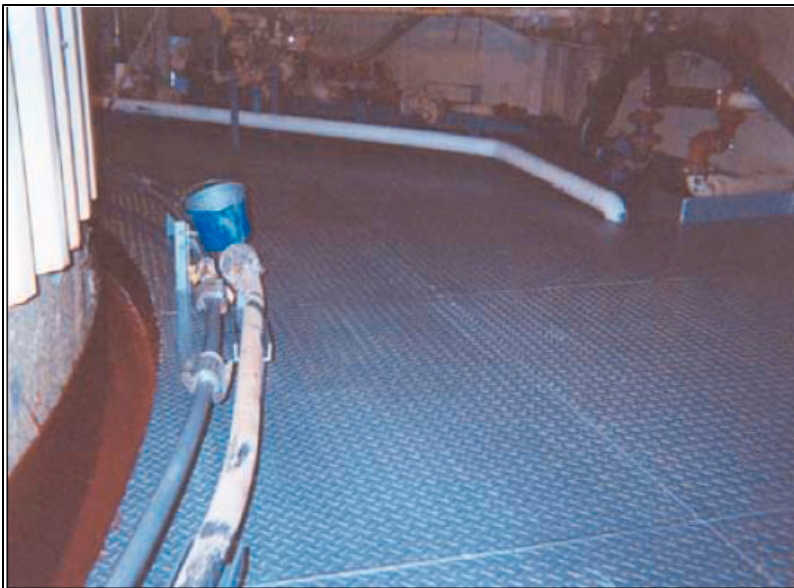


Project: SDA Penthouse Floor & Washdown Trench

The Problem

This SDA Penthouse floor has seen years of corrosion from lime slurry and muratic acid cleaners that were used on the spray nozzles.

RPT and Thortex were called in...



The Solution

After manually preparing the floor and washdown trench, the diamond plate floor received 2 coats of **Thortex Corro-Tech GP**. The washdown trench was coated with **Thortex Chemi-Tech CR**.

This system is in over 50 penthouses with service exceeding 7 years.

Thortex Corro-Tech GP is a high-performance, anti-corrosive coating for use on new and existing steel structures for long-term protection where surface preparation is restricted.

Thortex Chemi-Tech CR is a high-performance, solvent-free, epoxy coating that is specifically designed for environments where exceptional chemical and corrosion resistance are needed.

Thortex America, Inc.

12 Iron Bridge Drive • Collegeville, PA 19426
800.578.2772 • www.thortex.com