

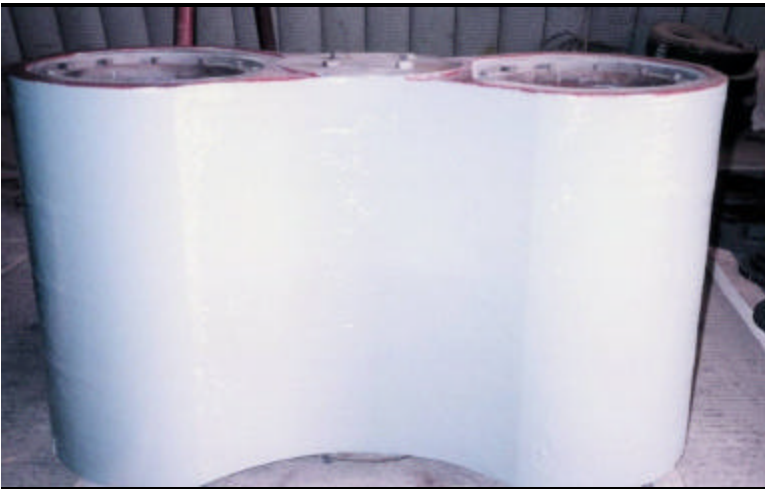
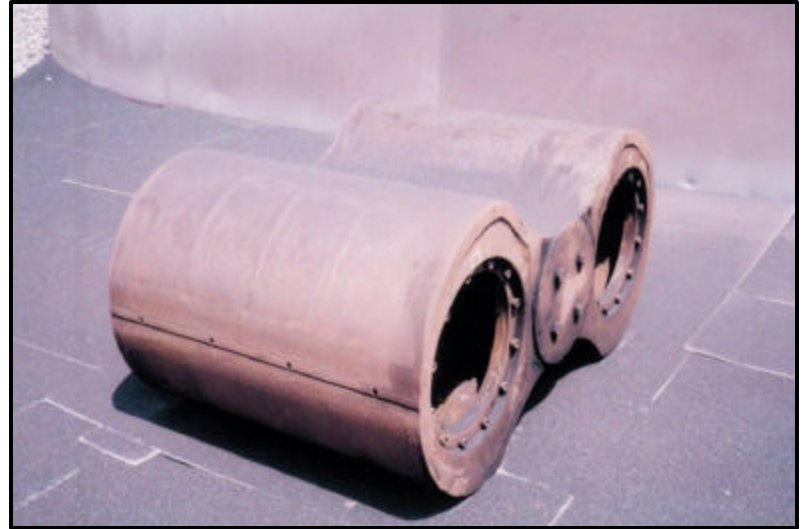


Project: PD Blower Lobes

The Problem

The owner of these Positive Displacement Blower Lobes was looking for a cost effective solution to prolonging the life of his equipment. The pump's efficiency was decreased because the lobes experienced chemical attack and erosion over their entire surface.

They called RPT and Thortex for solution.



The Solution

After manufacturing a template that was used to rebuild the lobe to its original tolerances, RPT abrasive blasted the lobes to a white metal finish. **Thortex Cerami-Tech EG** was used to fill the pits and rebuild the lobe to within 30 mils of tolerances. Two coats of **Thortex Cerami-Tech CR** were then applied to return the lobes to their original tolerances and add a hard-wearing chemical-resistant coating.

RPT has since performed this operation on PD Blowers throughout the USA, Mexico and the Caribbean.

Thortex Cerami-Tech EG is a high-performance, multi-purpose metal repair compound developed for rebuilding metal components in a fluid-flow environment damaged by erosion and corrosion.

Thortex Cerami-Tech CR is a high-performance, solvent-free coating system that has optimum physical and mechanical strengths and excellent resistance to erosion, corrosion and chemical attack.

Thortex America, Inc.

12 Iron Bridge Drive • Collegeville, PA 19426
800.578.2772 • www.thortex.com