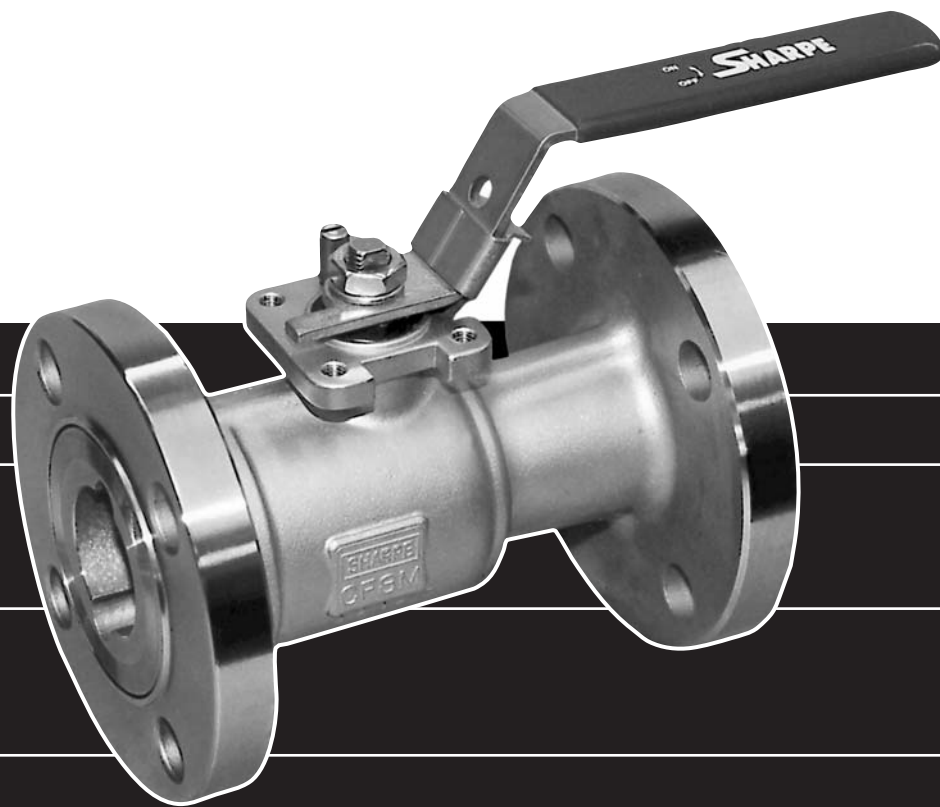


SHARPE[®] VALVES

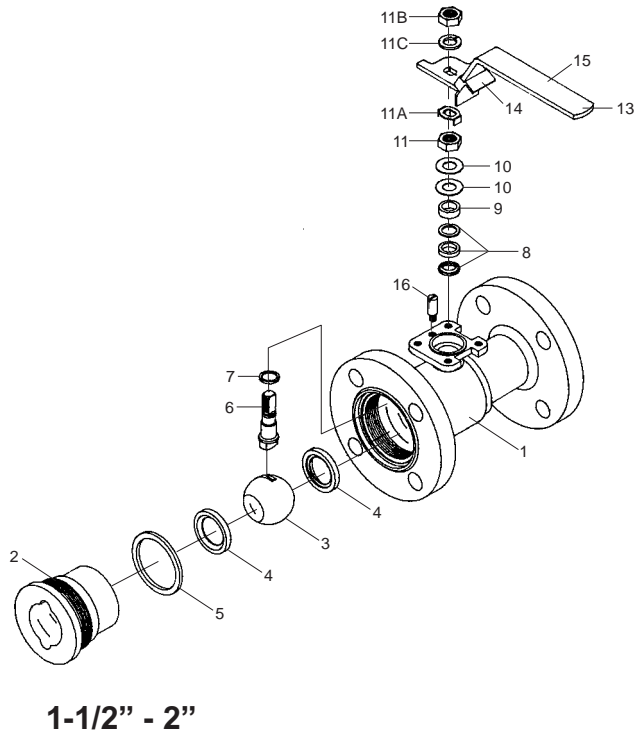


**FLANGED STANDARD PORT
BALL VALVES
FIRE SAFE SERIES FS54 / CLASS 150**

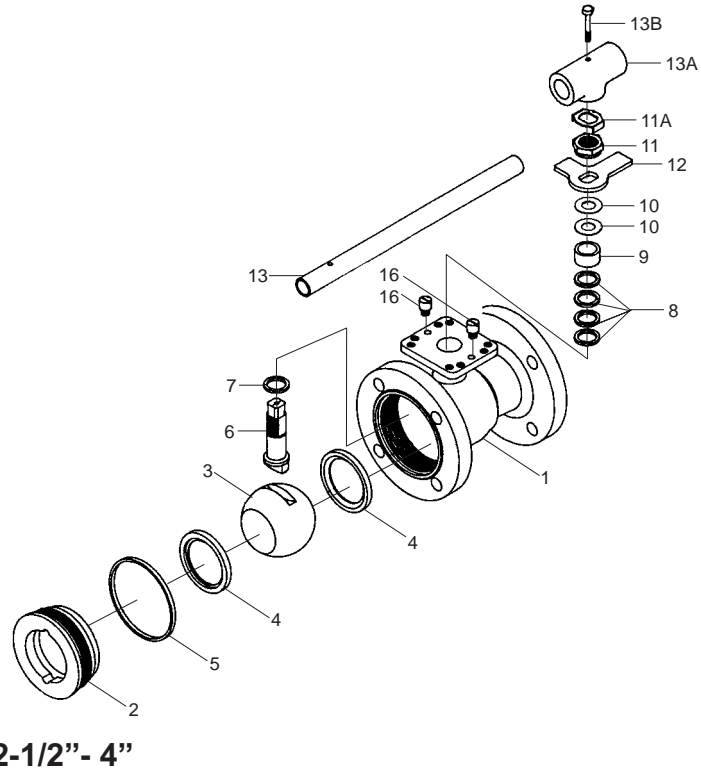
SERIES FS54 VALVE PARTS AND IDENTIFICATION

**CLASS 150
FIRE SAFE API 607 4th EDITION
BLOW OUT PROOF STEM
ANTI-STATIC DEVICE**

APPLICABLE STANDARDS	
Shell Wall Thickness	ASME B 16.34
Face to Face Dimensions	ASME B 16.10
Flange Dimensions	ASME B 16.5
Fire Safe	API 607 4th Edition
Tests	ASME B16.34 API 598 (Optional)
Basic Design	ASME B16.34



1-1/2" - 2"



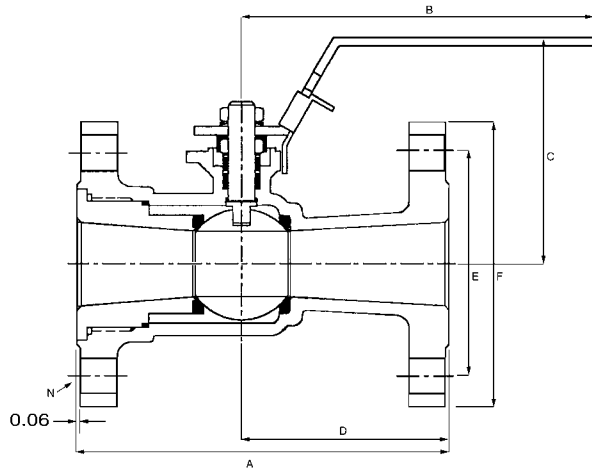
2-1/2" - 4"

PART NO.	PART	QTY.	MATERIAL
1	Body	1	316 Stainless Steel Carbon Steel Alloy 20 Hastelloy C Monel
2	End Connector	1	316 Stainless Steel Carbon Steel Alloy 20 Hastelloy C Monel
3	Ball	1	316 Stainless Steel Alloy 20 Hastelloy C Monel
4	Seat	2	TFE Reinforced TFE NOVA TFM(Super TFE)
5	Body Seal	1	Grafoil
6	Stem	1	316 Stainless Steel Alloy 20 Hastelloy C Monel 17-4PH (Option)
7	Thrust Bearing	2	Reinforced TFE
8	Stem Packing	2	Grafoil
9	Gland Packing	1	304 Stainless Steel
10	Belleville Washer	2/4	304 Stainless Steel
11	Packing Nut	1	304 Stainless Steel

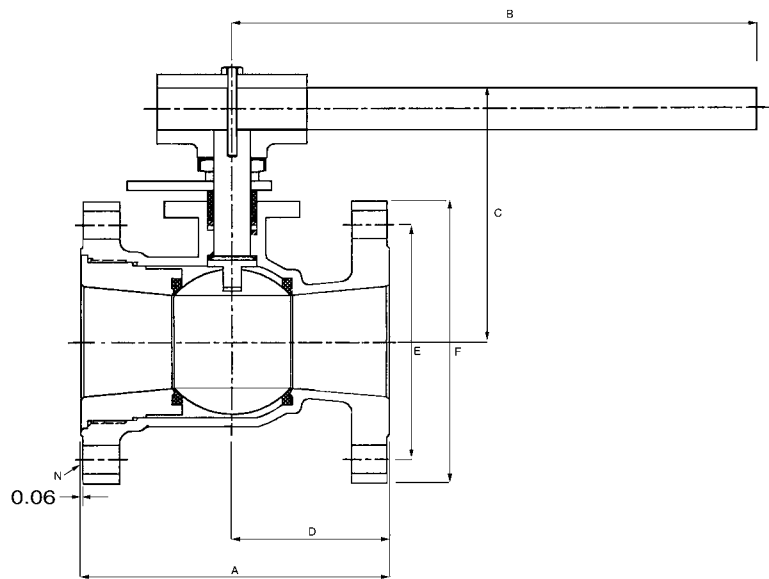
PART NO.	PART	QTY.	MATERIAL
11A	Lock Tab	1	Stainless Steel
11B	Handle Nut (1-1/2"-2")	1	304 Stainless Steel
11C	Lock Washer	1	304 Stainless Steel (1-1/2"-2")
12	Stopper	1	304 Stainless Steel
12A	Snap Ring	1	Stainless Steel (6"-8")
13	Handle 2-1/2-4" Lockable Handle	1 1	304 Stainless Steel (1-1/2"-2") Galvanized Steel (2-1/2"-4")
13A	Wrench Block	1	Stainless Steel
13B	Hex Head Bolt	1	304 Stainless Steel
14	Locking Device (1-1/2"-2")	1	304 Stainless Steel
15	Sleeve (1-1/2" - 2-1/2")	1	Vinyl
16	Stop Pin (1-1/2"-2") (2-1/2"-4")	1 2	304 Stainless Steel 304 Stainless Steel

SERIES FS54 DIMENSIONS

1-1/2" - 2"



2-1/2" - 4"



CV* DATA

1-1/2"	82
2"	120
2-1/2"	240
3"	350
4"	720

PORT

1-1/2"	1.25
2"	1.50
2-1/2"	2.00
3"	2.50
4"	3.00

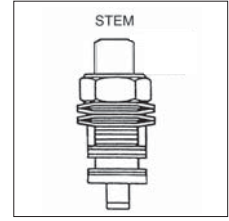
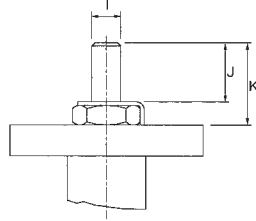
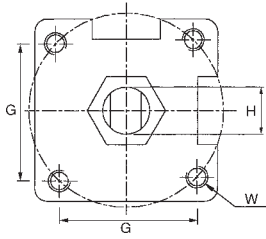
WEIGHT (lbs.)

1-1/2"	16
2"	17
2-1/2"	26
3"	34
4"	56

*CV: The volume of water in gal./min. that will pass through a given valve with a pressure drop of 1 PSI.

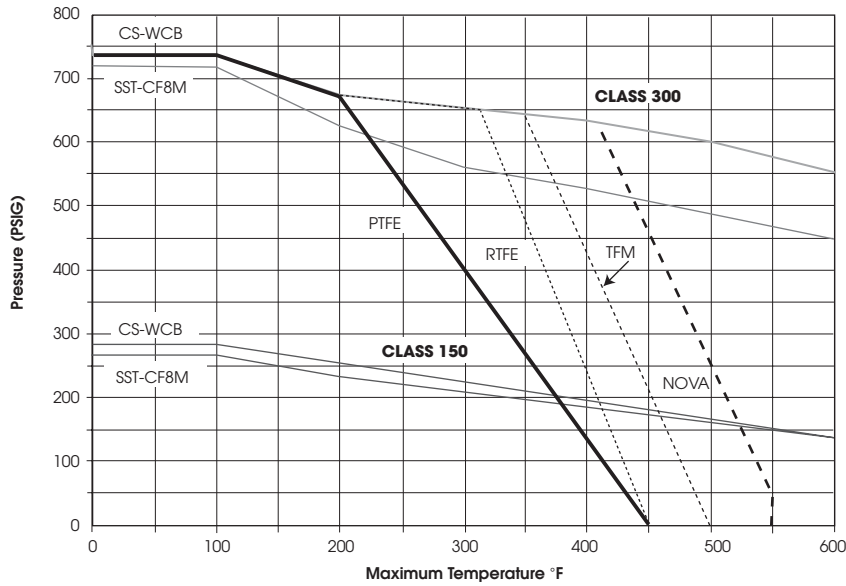
SIZE	A	B	C	D	E	F	N	G	H	I	J	K	W
1-1/2"	6.50	6.30	4.00	3.68	3.56	5.00	4	1.94	9/16-18 UNF	.35	.42	.83	M8
2"	7.00	9.00	4.50	4.45	4.75	6.00	4	1.94	9/16-18 UNF	.35	.42	1.14	M8
2-1/2"	7.50	9.00	6.70	3.98	5.50	7.00	4	2.84	M20	.55	.55	1.14	M10
3"	8.00	13.75	7.00	4.03	6.00	7.48	4	2.84	1-14 UNS	.745	.66	1.83	M10
4"	9.00	13.75	7.70	4.53	7.50	9.01	8	2.84	1-14 UNS	.745	.66	1.83	M10

1" - 4"



1" - 4"
STEM ARRANGEMENT

SEAT PRESSURE/TEMPERATURE RATING SERIES FS54



HOW TO ORDER

VALVE SIZE	VALVE SERIES	CLASS	ALLOY	SEATS	OPTIONS
1" 1-1/2" 2" 2-1/2" 3" 4"	FS54	150# = 11	2 = Alloy 20 4 = Carbon Steel 5 = Hastelloy C 6 = Stainless Steel 3 = Monel	T = TFE M = TFM R = Reinforced TFE N = NOVA	X = Oxygen Service OH = Oval Handle F = Fugitive Emissions Certified ANSI 593.00.01 E = Extended Stem L = Lockable Extended Stem D = Leak Detection Stem GO = Gear Operator 7 = 17-4PH Stem A = Nace

2" FS54 11 6 T X

Teflon® is a registered trademark of E.I. DuPont.

SHARPE VALVES

A DIVISION OF Sharon

Toll-Free 1-877-7SHARPE
E-Mail: sharpediv@aol.com
www.sharpevalves.com

504 West Wrightwood Ave.
Elmhurst, IL 60126